

DISCOVER KEESLER

NOVEMBER 2024



**YOUTH FLAG FOOTBALL
& SIDELINE CHEER**

FOOTBALL AT THE CLUB

**SUNDAY FUNDAY
AT GAUDÉ LANES**

HARD TIMES TURKEY SHOOT



EXODUS BUS TICKETS ON SALE NOW TO/FROM GULFPORT & NEW ORLEANS AIRPORTS

Information, Tickets & Travel

Dec 21 - Jan 5

Must show a purchased airline ticket to purchase a bus ticket. Tickets must be purchased in advance by the person who is using the ticket.

Tickets available at the ITT Kiosk,
Main Exchange, Mon-Fri | 10 am - 5 pm.

Tickets will also be sold at the
Levitow Training Support Facility
Nov 22 | 1-3 pm, Dec 5 | 5-7 pm,
Dec 6 | 1-3 pm & Dec 13 | 4-7 pm.



Scan for
details and
bus schedules

228.377.1658/3818



FOOTBALL

***** AT THE CLUB *****

SATURDAYS
COLLEGE GAMES

SUNDAYS
NFL ACTION

THE LOUNGE | BAY BREEZE EVENT CENTER

Food & Drink Specials | Doors Open 11 am

228.377.2334

COMMANDER'S CORNER

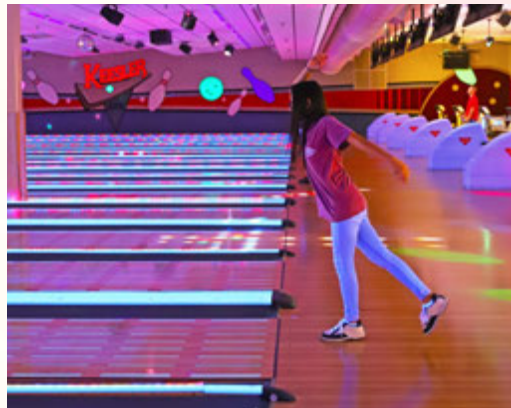
Pumpkin spice is in the air and it's beginning to feel like fall on the Gulf Coast. There is a sense of transition as the leaves change and fall to the ground and the weather turns cooler. It is also a time where we begin to reflect on the year and have gratitude for our blessings. I hope that you can take this change of season as a time for gathering with those that are important to you and give thanks for your families and our community. FSS is thankful for all of you and hope that we can provide you with more memories for you and your families this month and leading into the holiday season.



Do you love to indulge in turkey and all the trimmings but don't want to have the added stress of preparation and cleanup? Join us at the Azalea Dining Facility on Nov 28 where our team will be serving up a **Thanksgiving Day Feast**. This is open to all Airmen, retirees, and their families. ESM members eat free, all other attendees pay the ala-carte prices. We will be serving Thanksgiving meals from 11 am - 3pm. We hope to see you there!



Looking to have fun on the weekends? We have so many options for you from **College and NFL Football** in The Lounge at the Bay Breeze Events Center on Saturdays and Sundays to **Bowling** at Gaudé Lanes or creating **Fall Crafts** at the McBride Commons.



You can learn more about everything offered on the installation by exploring this magazine or checking out our webpage - discoverkeesler.com. You can also check us out on Facebook [@81st Force Support Squadron](https://www.facebook.com/81stForceSupportSquadron).

Have a great month, Team Keesler!

Maj Kayleigh Stilwell
Commander,
81st Force Support Squadron

BAY BREEZE GOLF COURSE

500 Ploesti Drive, Bldg. 6732 | 228.377.3832



FIRST FRIDAY AT THE RANGE

Nov 1 | 3 pm - dusk

Discounted range balls, food and drink specials, outdoor bar, and ax throwing. A fun evening for all.

MASTERING GOLF'S TOUGHEST SHOTS CLINIC

Nov 9 | 10:30 am - noon

Learn to overcome problematic shots by considering data (lie, wind, yardage, and course conditions), and selecting the correct club. Ages 18+. \$75/person.



HARD TIMES TURKEY SHOOT

Nov 23 | 9 am

Two player scramble with extreme course conditions. Includes food, drinks, and a chance to win a turkey. Applicable green and cart fees apply. Ages 18+. \$25/person. Sponsored by Mitchell Distributing.

SAP GOLF 101

Nov 16 | 9:30 - 11 am

Learn the rules, etiquette and swing basics of golf. A must for those new to the game. \$5 for SAP eligible and Ages 18+. \$30/person.

SAP (Single Airman Program)

Discount pricing for service members stationed at Keesler on unaccompanied orders, regardless of rank or marital status. For more information call 228.377.3832.

TWILIGHT TUESDAY & THURSDAYS

Tuesdays & Thursdays

Pay the twilight rate to golf all day, includes green fee and shared cart.

Ages 18+. \$24: E1-E4

\$29: E-5 & Up, DOD & Retirees

\$32: Guests

TRACKMAN SIMULATOR SPECIAL

Check out the Trackman Indoor Golf Simulator with a special offer: buy one hour for \$40 (up to 8 people) and get the second hour 50% off. Call 228.377.3832 to make an appointment.

GIFT CERTIFICATE

Bay Breeze Golf Course



THE HOLIDAY SEASON IS AROUND THE CORNER

A Bay Breeze Golf Course Gift Certificate makes the perfect gift. Call our Pro Shop for details.

OUTDOOR RECREATION

625 Marina Dr, Bldg. 6726 | 228.377.3160

RecOn OFFSHORE FISHING TRIP

Nov 8 | 6:45 am

Horn, Ship, & Cat Islands

6-hour barrier island fishing trip.

Bring snacks, lunch and drinks.

\$30 RecOn eligible. Register by Nov 6.

RecOn DEEP SEA SWORD/TUNA FISHING TRIP

Nov 8 & 23 | 5:45 am

Biloxi Small Craft Harbor

14-hour fishing trip. Bring snacks, lunch and drinks. \$166 RecOn eligible.

\$366/person. Ages 12+. Register by Nov 4 & .19

RecOn: Discount pricing for service members and their families. For more information call 228.377.3160.

SAP PAINTBALL

Nov 9 | 8:30 am | McHenry, MS

This high-paced outdoor activity features multiple play styles and courses. Gear, and transportation included. Ages 18+.

\$20 SAP eligible. Register by Nov 6.

SAP (Single Airman Program)

Discount pricing for service members stationed at Keesler on unaccompanied orders, regardless of rank or marital status. For more information call 228.377.3160.



BETHEL MOUNTAIN BIKE RIDE

Nov 16 | 8 am | Saucier, MS

Experience adrenaline-pumping challenges and awe-inspiring scenery. Includes full suspension mountain bike, gear, lunch, and transportation.

\$30/person. Ages 18+. Register by Nov 13.

BACK BAY FISHING TRIP

Nov 19 | 7 am | Biloxi Back Bay, MS

4-hour trip, includes gear, bait, fuel, and fishing licenses. Ages 12+. \$60/person.

Register by Nov 17.

SUNSET CRUISE

Nov 21 | 4:15 pm | Biloxi Sound

Charcuterie platter will be served during the voyage. BYOB. Ages 8 +. \$35/person.

Register by Nov 20.

FISHING RODEO

Nov 23 | 8 am | Marina Pier

Test your skills and reel in fantastic prizes. Bait is included, so all you need to bring is your gear. Ages 3+.

\$5/person. Register by Nov 23.

INFORMATION, TICKETS & TRAVEL TICKETS

Exodus Bus Tickets to/from Gulfport & New Orleans airports are on sale now.

Must show a purchased airline ticket to purchase a bus ticket. Tickets must be purchased in advance by the person who is using the ticket.

Tickets will be sold at the ITT Kiosk, Main Exchange, Mon-Fri | 10 am - 5 pm.

Tickets will also be sold at the Levitow Training Support Facility

Nov 22 | 1-3 pm, Dec 5 | 5-7 pm,

Dec 6 | 1-3 pm & Dec 13 | 4-7 pm..



SCAN FOR
OUTDOOR
RECREATION
ONLINE
RESERVATIONS

GAUDÉ LANES BOWLING CENTER

409 G St, Bldg 1203 | 228.377.2817

PIZZA, PINS & POP

\$50 for pizza, drinks,
two hours of bowling & shoes.
Up to 5 people.



SUNDAY FUNDAY

Sundays | 11 am - 6 pm

Watch your favorite football teams and
enjoy unlimited bowling and shoe rental.
\$12/person.

PENNY-A-PIN

Tuesdays | 5-9 pm

The score you bowl is the price
you pay. \$2²⁵/person/shoe rental.

DOLLAR NIGHT

Wednesdays | 5-9 pm

\$1 ea | Bowling game,
shoe rental, slice of pizza,
nachos, hot dog, and soft drink.



SAP BOWLING THURSDAYS

Thursdays (Now open until 9 pm)

Free bowling for the first 25 single
airmen. Shoe rental not included.
SAP (Single Airman Program)

Discount pricing for service members stationed
at Keesler on unaccompanied orders, regardless
of rank or marital status. For more information
call 228.377.2817.

COSMIC BOWLING

Saturday Nights | 6-10 pm

\$20/hour | \$33/two hours

11th FRAME SPORTS BAR

Featuring a full bar and big screen TVs,
pool tables and darts. Open Thu-Sat.

11th FRAME CAFÉ

Serving breakfast and lunch specials
Mon-Fri or order off the grill for lunch
and dinner.

HOLIDAY SALE

Nov 25 - Dec 6 | Gaudé Lanes Pro Shop



228.377.2817

Cirque Dreams HOLIDAZE

A BRILLIANT AND WHIMSICAL FAMILY HOLIDAY SPECTACULAR

NOV 22 & 23

FEATURING A FANTASTICAL CAST OF HOLIDAY STORYBOOK CHARACTERS THAT COMES TO LIFE IN THIS BROADWAY-STYLE CIRQUE PRODUCTION.



Christmas with Santa

A BR PRIME EXPERIENCE

DEC 1

AN EXCLUSIVE BRUNCH FEATURING EVERYONE'S FAVORITE BIG GUY, SANTA!

FOR DETAILS AND RESERVATIONS, VISIT BEAURIVAGE.COM/SANTA

COMBINING VINTAGE COMIC STYLE AND HIGH-ENERGY CONTEMPORARY MUSIC, THIS MODERN-DAY FAMILY HOLIDAY CLASSIC IS SURE TO MAKE EVERYONE EMBRACE THEIR INNER ELF.



The Musical

DECEMBER 12 - 28

DARK DECEMBER 13, 16 & 23

TICKETS START AT

\$25*

PACKAGES OF 4 JUST

\$60*

OFFER CODE: ELF



Presented through special arrangement with Music Theatre International (MTI). All authorized performance materials are also supplied by MTI (mtishow.com).

*OFFER BASED ON AVAILABILITY. PLUS TAX AND FEES. SOME RESTRICTIONS MAY APPLY.



KEEP THE PARTY GOING
EIGHT 75.
LIVE MUSIC NIGHTLY

Must be 21.

25
Beau Rivage

CELEBRATING 25 YEARS OF
A FEELING LIKE NO OTHER®

BEAURIVAGE.COM



MGM
REWARDS

©2024 MGM Resorts International®. All rights reserved. Gambling problem? Call 1.800.GAMBLER.

Paid advertisement.

ART & CRAFTS CENTER

512 Larcher Blvd., Bldg. 2222 | 228.377.2821



MUGGY MONDAYS

Enjoy free glaze and studio time on Mondays. Paint your choice of mug.

A "JOLLY" CERAMICS SALE

Nov 1-30

Paint your choice of holiday themed ceramics and get complimentary paint, studio time, and kiln firing. Limit to two pieces per person per visit and items must be completed in the studio.



DAF NOVEMBER THEMED CRAFTS

Nov 8 | 3-6 pm & Nov 9 | 10 am - 4 pm

Create ceramics, mosaics, and making "Turkeys in Disguise". All ages.

Free for Deployed Affected Families.

DAF (Deployed Affected Families)

Allows deployed affected service members and their families to participate in FSS activities.

For more information call 228.377.2821.

R4R LIGHTED CERAMIC BIRDHOUSE

Nov 16 | 10 am - noon

Learn ceramic dry brushing techniques.

Ages 14 +. \$5/R4R eligible

\$40/person. Register by Nov 15.

R4R (Recharge For Resiliency)

Discount pricing for service members and their families. For more information call 228.377.2821.

POTTERY HAND-BUILDING CLASS

Nov 8 | 5-8 pm

Ages 8+. \$45/person. Register by Nov 7.

BEGINNER POTTERY

WHEEL CLASS

Nov 8 & Nov 16 | 9:30 am - noon

Ages 12+. \$45/person.

Register by Nov 7 & Nov 15.*

INTERMEDIATE POTTERY

WHEEL CLASS

Nov 8 & Nov 16 | 1-3:30 pm

Ages 12+. \$45/person.

Register by Nov 7 & Nov 15.*

*Pottery project completion additional cost.

CULINARY CLASS:

JAPANESE CUISINE

Nov 16 | 1-3 pm

Menu: Niku udon (soup), shrimp and vegetable tempura, okonomiyaki

California roll sushi and tuna sushi rolls.

Ages 18+. \$45/person. Register by Nov 13.

AIR FORCE



UNITE PROGRAM

DRAGON UNITE CHALLENGE

Nov 4-27 | 10 am - 4 pm

Mon, Tues & Wed in Nov

Relax and enjoy team building while painting your choice of ceramics priced \$10 or less.

UNITE Program

Provides recreational programs that build cohesion for personnel within their unit.

For more information call 228.377.8222.

*Shops close Nov 27 & 31, noon, for inventory.

McBRIDE COMMONS

512 Larcher Blvd., Bldg. 2222 | 228.377.2821



INTERNATIONAL GAMES MONTH

Saturdays | Nov 2, 9, 16, 23 & 30

Enjoy fun and exciting gaming opportunities. Food and beverages are welcome. Free board and card gaming all day. Plus a Jenga Tournament on Nov 23.

FARMERS & CRAFTS MARKET

Nov 1 | 10 am - 1 pm | Marina Park

Fresh locally grown produce, baked goods, farm processed goods, and flowers.

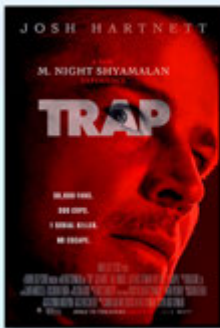
FRIDAY NIGHT MOVIES

Nov 8 & 29 | 7 pm

Spend your Friday nights enjoying a movie. Snacks and beverages are welcome.

Nov 8 | Trap

Nov 29 | Despicable Me 4



BOARD GAMING

Nov 8 & 22 | 10 am - 2 pm

Enjoy some of your favorite board games with friends and make a few new ones.



McBRIDEGAMING

Nov 8, 15, & 22 | Noon - 6 pm

Enjoy a full day of gaming and playing cards. Choose from action, fighting, and sports games to play.

CHESS TOURNAMENT

Nov 16 | Noon

Free entry and a prize awarded to the best player.



YOUTH PROGRAMS

Youth Center | 603 J St. Bldg. 6801 | 228.377.4116

NEW PARENTS ORIENTATION

Nov 1 & 7 | 9:30 - 10 am | 1 - 1:30 pm

Tour the facility, meet staff, and learn more about programs and amenities.

SIDELINE CHEER AND FLAG FOOTBALL REGISTRATION

Nov 1-30

The values of flag football and cheer set up a youth for success on and off the field. Character, leadership, resilience and teamwork skills are practiced.

Sideline Cheer includes skirt, shirt and bow.

Ages 5-12 | \$80/youth

Flag Football includes jersey.

Ages 3-4 | \$40/youth

Ages 5-12 | \$50/youth



FALL YOUTH CENTER INSTRUCTIONAL CLASSES

- Piano
- Tumbling
- Majorette
- Voice Lessons
- Jiu-Jitsu
- And More

228.377.4116



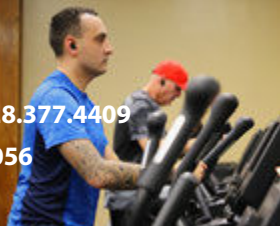
SCAN FOR
THE CYPBMS
PARENT PORTAL

Register through CYPBMS Parent Portal or call 228.377.4116. All events located at the Youth Center, unless otherwise noted.

FITNESS CENTERS

Dragon Fitness Center | 606 Chappie James Blvd. Bldg 4106 | 228.377.4409

Triangle Fitness Center | 7504 Falcon St., Bldg 7504 | 228.377.3056



NOVEMBER DRAGON FITNESS CLASS SCHEDULE



Monday

11am - noon... Bootcamp

Noon - 1 pm... Pilates

5-6 pm Zumba

5:30-6:30 pm ... TurboCore

No classes Nov 11 for Veterans Day.

Tuesday

10-11am Yoga

11am - noon... HIIT

Noon - 1 pm... Cycling

4:15 - 5:15 pm .. Cycling

5-6 pm Zumba

Wednesday

Noon - 1 pm... Cycling

5:30 - 6:30 pm .. TurboCore

Thursday

11am - noon... HIIT

Noon - 1 pm... Yoga

4:15 - 5:15 pm .. Cycling

5-6 pm Zumba

No classes Nov 28 for

Thanksgiving Day.

Friday

11am - noon... Tabata

*All Fitness Classes are at
the Dragon Fitness Center.*

SQUADRON CHRISTMAS CARD CONTEST

Holiday kits, workspace,
rules, and details are
available at McBride Commons.
228.377.2821



Inaugural Dragon
DUATHLON
1mi
12mi
5km

Scan To Sign Up

Nov 22 | 7 am
18 + | Free admission
No electric bikes

For more information
Contact the Fitness Center or Chaplain Corps:
228.377.2967 | 228.377.2444 | 228.377.4859

MILITARY & FAMILY READINESS CENTER

Sablich Center, Room 110, Bldg. 701 • 228.376.8728

All events are in the Sablich Center, Room 108, unless noted otherwise. Pre-registration required, spouses invited to attend.

REDEPLOYMENT BRIEF

Thursdays | 12:30 - 2 pm

DEPLOYMENT BRIEF

Nov 4 | 8 - 9:30 am
& Nov 18 | 1 - 2:30 pm

PRE-SEPARATION COUNSELING

Nov 5 | 1-3 pm & Nov 19 | 9-11 am

BUNDLES FOR BABIES

Nov 7 | 8:30 am - Noon

10 STEPS TO A FEDERAL RESUME

Oct 10 | 8 am - noon

BASE NEWCOMERS

Nov 12 | 8 am - noon

TRANSITION ASSISTANCE WORKSHOP

Nov 18-20 | 8 am - 4 pm

PRE-ARRIVAL VIRTUAL ORIENTATION

Nov 19 | 1-2 pm

DOL VOCATIONAL WORKSHOP

Nov 21-22 | 8 am - 4 pm

PLAN MY MOVE PCS BRIEFING

Nov 20 | 3 - 4:30 pm

M&FRC is closed on the third Thursday for training.



HOLIDAY GUESTS?

Book accommodations for family & friends at the Inns of Keesler.

Now accepting reservations for the holidays.

228.374.0088



ARMED SERVICES BLOOD PROGRAM

OFFICIAL BLOOD PROGRAM OF US MILITARY

*Donate Blood -
Make a Difference*

For more information or to schedule an appointment call (228) 376-6100.



111 G St. Bldg. 5901
Located next to the Post Office

ASBP

Paid Advertisement. No Federal endorsement of advertiser intended.

81 FSS DIRECTORY

Auto Hobby Shop

109 G St., Bldg 6005. 228.377.3872/2821

Bay Breeze Event Center

500 Ploesti Drive, Bldg 6732

Business Office, Event &
Meeting Reservations 228.377.2334

Catering 228.377.2219

PRESSED: Paninis & Coffee 228.377.3826

The Lounge 228.377.2334

Play Place 228.377.2821

Bay Breeze Golf Course

500 Ploesti Drive, Bldg 6732 228.377.3832

Child & Youth Programs

Child Development Center

604 J St., Bldg 0308 228.377.2211

Family Child Care

Sablich Center, Bldg 701
Rm 207A-1

Office 228.376.1146

Cell 228.264.0620

School Liaison Officer

Sablich Center, Bldg 701
Rm 126 228.376.8505

Youth Center

603 J St. Bldg 6801 228.377.4116

Dining Facilities

Azaela Dining

611 Parade Lane, Bldg 6960 228.377.3409

Live Oak Dining

505 E St, Bldg 2001 228.377.3854

Magnolia Dining

216 Ploesti Dr, Bldg 7409 228.377.4368

Fitness Centers

Blake Fitness Center (closed)

1201 H St. Bldg 1201 228.377.4385

Dragon Fitness Center

606 Chappie James Blvd
Bldg 4106. 228.377.4409

Triangle Fitness Center

7504 Falcon St., Bldg 7504 228.377.3056

Intramural Sports Office

7504 Falcon St., Bldg 7504 228.377.2444

Gaudé Lanes Bowling Center

409 G St., Bldg 1203. 228.377.2817

11th Frame Café

409 G St., Bldg 1203. 228.377.2817

11th Frame Sports Bar

409 G St., Bldg 1203. 228.377.2817

Information, Tickets & Travel

506 Larcher Blvd, Bldg 2306,

The Exchange 228.377.3818/1658

Inns of Keesler

405 Fisher Street, Bldg 470. 228.374.0088

McBride Commons

512 Larcher Blvd, Bldg 2222 228.377.2821

Arts & Crafts Center 228.377.2821

Engraving Shop 228.377.2821

Frame Shop 228.377.2821

Community Center 228.377.2821

Outdoor Recreation

Marina Dr, Bldg 6726 228.377.3160

Fam Camp RV Park

2003 Atkinson Rd. 228.377.9050

Support Services

Civilian Personnel/ NAF Human Resources

500 Fisher St, Bldg 701, Rm 125 228.376.8720

Education Services

500 Fisher St, Bldg 701, Rm 224 228.376.8708

ID Cards/DEERS Enrollment

500 Fisher St, Bldg 701, Rm 125. 228.376.8347

Appointments available at

idco.dmdc.osd.mil/idco

Military & Family Readiness Center (M&FRC)

500 Fisher St, Bldg 701, Rm 110. 228.376.8728

M&FRC Student Annex

7310 Phantom St,
Bldg 7310, Rm 134. 228.377.0155

Mortuary Affairs

500 Fisher St, Bldg 701, Rm 108. 228.376.8184

After Hours 228.377.4330

Unite Office

500 Ploesti Drive, Bldg 6732 228.376.8222

CHRISTMAS IN THE PARK

DEC 5 | 5 PM
MARINA PARK

A Magical Celebration of the Season
Tree Lighting | Photos with Santa
Cookie Decorating | Face Painting
Holiday Crafts | Ugly Sweater Contest
And More

4 pm EFMP/Deployed Affected Hour
Free Admission!



Sponsored by



AT&T

Gulfport
BEHAVIORAL HEALTH SYSTEM

KeeslerFederal
CREDIT UNION

Smile Doctors
Orthodontics

FIRST
COMMAND



CELEBRATING 25 YEARS OF
A FEELING LIKE NO OTHER®



MGM RESORTS AND BEAU RIVAGE ARE PROUD TO OFFER ALL ACTIVE-DUTY U.S. MILITARY, VETERANS, AND THEIR SPOUSES EXCLUSIVE BENEFITS AND OFFERS,* INCLUDING:

- ★ **ROOMS:** 10% off standard rate
- ★ **DINING:** 10% off at all Beau Rivage restaurants
- ★ **ATTRACTIONS:** 20% off Topgolf Swing Suite hourly bay rentals
- ★ **SPA:** 25% off Beau Spa & Salon services
- ★ **MGM REWARDS:** Automatic upgrade to Pearl status and benefits at all MGM Resorts destinations nationwide

FOR MORE INFORMATION AND A COMPLETE LIST OF MGM RESORTS OFFERS, DISCOUNTS AND BENEFITS, VISIT
MGMRESORTS.COM/MILITARY

875 BEACH BOULEVARD • 888.750.7111 • BEAURIVAGE.COM

*Must present valid military ID at check in. Cannot be combined with any other offer. Dates available subject to change and restrictions and blackout dates may apply. ©2024 MGM Resorts International®. All rights reserved.

Paid advertisement. Please drink responsibly.

